



REGAL  
— STUDENTS —



## Sturry Villas

Sturry Hill, Sturry, CT2 0NQ

£860 PCM



The property available is a one bedroom ground floor apartment comprising of a kitchen, lounge/diner, one double bedroom and a bathroom. The property will be offered with one allocated parking space.

Sturry Village is perfectly placed on the outskirts of Canterbury and provides good access to the city and surrounding coastal towns such as Whitstable, Herne Bay and Margate. The development is located nearby a Sturry Train Station, which allows you access to the HS1 train link to St Pancras International, via Ashford.

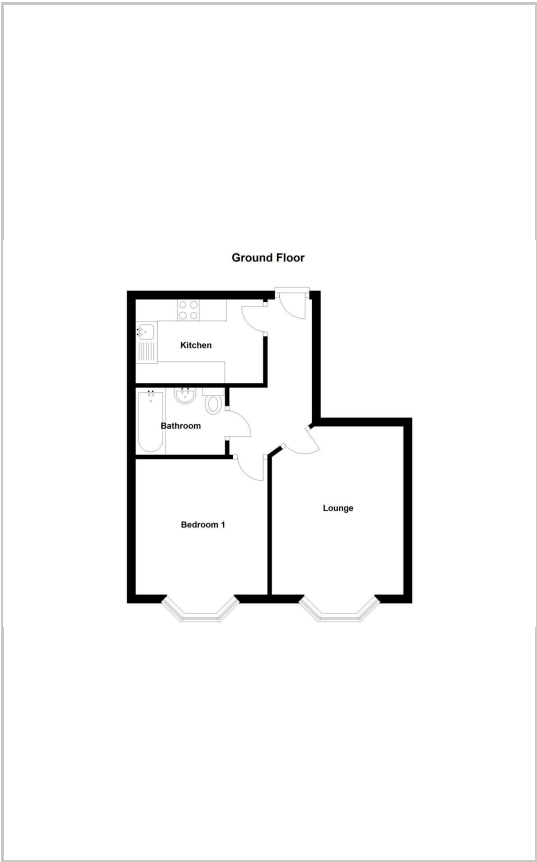
NOTE: 24 Month Contract. Council Tax Band B.



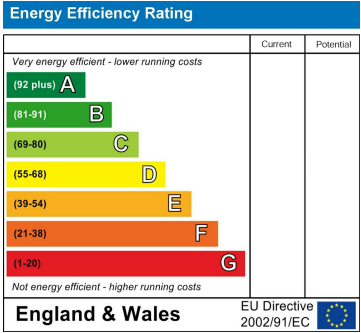
Area Map



Floor Plans



Energy Efficiency Graph



These particulars, whilst believed to be accurate are set out as a general outline only for guidance and do not constitute any part of an offer or contract. Intending purchasers should not rely on them as statements of representation of fact, but must satisfy themselves by inspection or otherwise as to their accuracy. No person in this firms employment has the authority to make or give any representation or warranty in respect of the property.

57 Castle Street, Canterbury, Kent, CT1 2PY  
Tel: 01227 767200 Email: lettingssales@regal-estates.co.uk